



## Knowsley Road

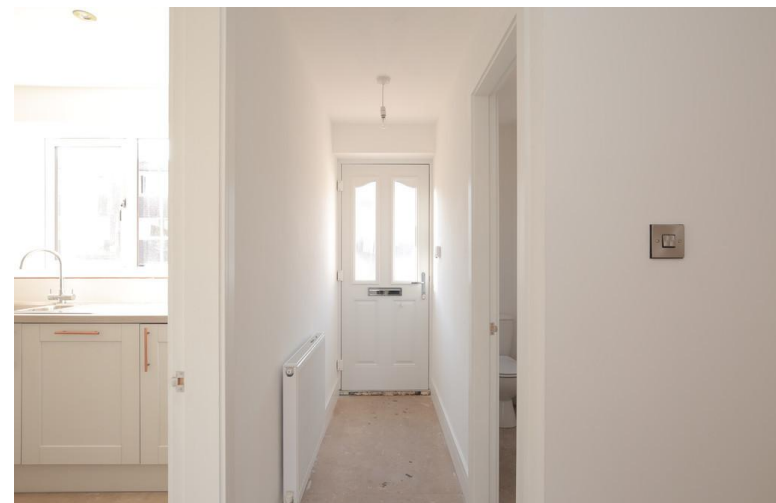
Offerton, Stockport, SK1 4JA

- 3 BEDROOM
- SEMI DETACHED
- GOOD SIZED GARDEN
- INSURANCE BACKED GUARANTEE

**Guide Price £245,000**

EPC Rating 'TBC'





## Property Description

### KNOWSLEY COTTAGES

This is an exciting new development of a pair of three bedroom semi detached homes. Built within the grounds of a 300 year old cottage, the best of all worlds prevails with a traditional design creating an authentic period look married to the latest building regulations so that you have a super efficient home too.

Set well back from the road with off the road car parking the homes have generous plots which mean that there are good sized gardens to the rear as well.

The location is convenient for Banks Lane Primary School and St Thomas' park along with nearby shops. Equally, there is easy access to the motorway, international airport, main line rail links and bus services.

N.B. They will be offered with an insurance backed guarantee.

THE ACCOMMODATION COMPRISES





## GROUND FLOOR

### HALL

12' 8" x 3' 2" (3.86m x 0.97m)

### CLOAKROOM / WC

5' 2" x 2' 11" (1.57m x 0.89m)

### LOUNGE/DINER

15' 6" x 15' 1" (4.72m x 4.6m)

### KITCHEN

10' 2" x 8' 3" (3.1m x 2.51m)

## FIRST FLOOR

## LANDING

### BATHROOM

7' 6" x 6' 5" (2.29m x 1.96m)

### BEDROOM

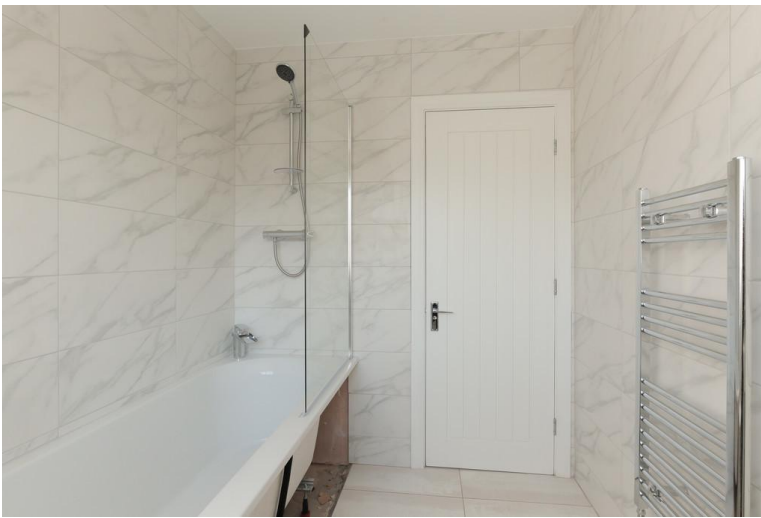
15' 11" x 8' 4" (4.85m x 2.54m)

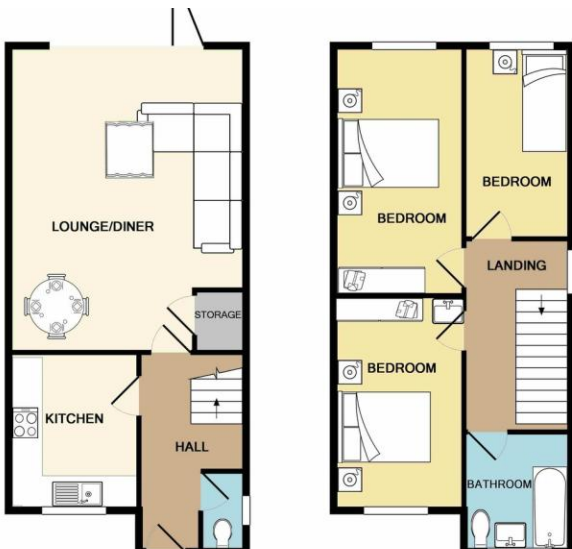
### BEDROOM

13' 10" x 8' 4" (4.22m x 2.54m)

### BEDROOM

13' 3" x 6' 6" (4.04m x 1.98m)





%epcGraph\_c\_1\_325%

450 Didsbury Road  
 Stockport  
 Cheshire  
 SK4 3BS

[www.joulesestateagents.com](http://www.joulesestateagents.com)  
[sales@joulesestateagents.com](mailto:sales@joulesestateagents.com)  
 0161 432 0432

Agents Note: Whilst every care has been taken to prepare these sales particulars, they are for guidance purposes only. All measurements are approximate and for general guidance purposes only and whilst every care has been taken to ensure their accuracy, they should not be relied upon and potential buyers are advised to recheck the measurements